

DESIGNING THE  
PERFECT KITCHEN

ARTS GUIDE:  
WHAT TO SEE

BEATING THE ODDS  
ON BREAST CANCER

THE BEST OF  
CAPITOL HILL

**45th**  
*Anniversary*  
Issue  
**45 WHO SHAPED  
WASHINGTON**

# WASHINGTONIAN

## Great New Restaurants

**25 Spots** Where It's a Treat to Eat  
**13 UP-AND-COMING CHEFS**  
THE LATEST DINING TRENDS—  
AND WHAT'S COMING NEXT



October 2010 \$3.95  
washingtonian.com 1.0>  
7 25274 62711 0

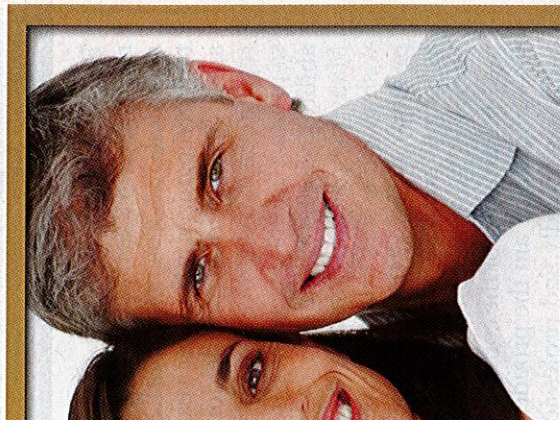
You'll find very good Southern cooking at Sou'Wester in DC.

**THINKING BIG:** How José Andrés Changed the Way We Dine Out



- Meningococcal
- Typhoid
- Japanese Encephalitis
- Twinrix (Hepatitis A&B)
- Hepatitis A
- Hepatitis B
- Rabies
- Gardasil (HPV)
- Zostavax (Shingles)

ALL  
TS, PC



the joy out of your life,  
your natural smile. They  
and retain a healthy  
appointment today.

w.WashDent.com

By Sherri Dalphonse

**I**n March, we listed the area's Top Doctors in 39 medical specialties—including the top breast-cancer surgeons. That list is reprinted here.

The oncologists and radiation oncologists on our Top Doctors list treat cancers of all kinds, not just breast cancer. So we asked each of the top breast-cancer surgeons which oncologists and radiation therapists he or she most recommends to women with breast cancer. The oncologists and radiation oncologists who received multiple recommendations are on this list.

Similarly, most plastic surgeons can do breast reconstruction, but we asked the top breast-cancer surgeons which plastic surgeons they regard most highly for breast-tissue repair. Those who received the most votes are also listed here.

## Oncology

*Oncologists treat cancer and generally coordinate any care required, such as chemotherapy. The following oncologists are especially recommended for the treatment of breast cancer.*

- Cheryl A. Aylesworth**, 2730 University Blvd. W., Suite 400, Wheaton; 301-942-9220.
- Linda M. Burrell**, 2730 University Blvd. W., Suite 400, Wheaton; 301-942-9220.
- Patrick J. Byrne**, 3020 Hamaker Ct., Suite 101, Fairfax; 703-849-0040.
- Joseph M. Haggerty**, 9707 Medical Center Dr., Suite 300, Rockville; 301-424-6231; also Bethesda.
- Carolyn B. Hendricks**, 6410 Rockledge Dr., Suite 506, Bethesda; 301-897-1503.
- Claudine Isaacs**, 3800 Reservoir Rd., NW; 202-444-3677.
- Harvey I. Katzen**, 8926 Woodyard Rd., Suite 101, Clinton; 301-868-7911; also Lanham.
- Bruce R. Kressel**, 2141 K St., NW, Suite 707; 202-293-5382; also Chevy Chase.
- Jey A. Maran**, 7901 Lake Manassas Dr., Gainesville; 571-222-2200; also Woodbridge.
- Lisa H. McGrail**, 5454 Wisconsin Ave., Suite 1300, Chevy Chase; 301-657-8587.
- G. P. Peter Pushkas**, 11510 Old Georgetown Rd., Rockville; 301-881-3940.
- Chitra Rajagopal**, 9715 Medical Center Dr., Suite 221, Rockville; 301-774-6136; also Olney.
- Nicholas J. Robert**, 8503 Arlington Blvd., Suite 400,

## Breast-Cancer Surgery

*Breast-cancer surgeons specialize in the removal of breast tumors and may also perform biopsies to diagnose or treat the cancer.*

- Stephanie R. Akbari**, 1625 N. George Mason Dr., Suite 315, Arlington; 703-717-4217.
- Katherine L. Alley**, 6410 Rockledge Dr., Suite 504, Bethesda; 301-493-8500.
- Marc E. Boisvert**, 106 Irving St., NW, Suite 3400N; 202-877-7937.
- Virginia Chiantella**, 821-D S. King St., Leesburg; 703-737-7333; also Reston.
- Robert A. Cohen**, 3299 Woodburn Rd., Suite 370, Annandale; 703-573-2070; also Woodbridge.
- Kirsten H. Edmiston**, 3620 Joseph Sewick Dr., Suite 406, Fairfax; 703-359-8640; also Annandale.
- Benjamin H. FINDER**, 7501 Surratts Rd., Suite 303, Clinton; 301-868-8485.
- Richard L. Flax**, 2440 M St., NW, Suite 326; 202-457-0600.
- Colette M. Magnant**, 5255 Loughboro Rd., NW, Renaissance Bldg., Fourth Floor; 202-243-5230.
- Nancy R. Markus**, 9711 Medical Center Dr., Suite 112, Rockville; 301-251-7797.
- Mami N. Martin**, 1715 N. George Mason Dr., Suite 403, Arlington; 703-528-0768; also Reston.
- John J. Moynihan**, 3620 Joseph Sewick Dr., Suite 406, Fairfax; 703-359-8640.
- Eric A. Oristian**, 2730 University Blvd. W., Suite 216, Wheaton; 301-942-4080.
- Martin G. Paul**, 3301 New Mexico Ave., NW, Suite 206; 202-895-1440.
- Marie F. Pennanen**, 5530 Wisconsin Ave., Suite 1455, Chevy Chase; 301-656-9010.
- Peter E. Petrucci**, 3301 New Mexico Ave., NW, Suite 206; 202-895-1440.
- William J. Purkert**, 8316 Arlington Blvd., Suite 410, Fairfax; 703-573-6985.
- Glenn Sandler**, 9707 Medical Center Dr., Suite 320, Rockville; 301-251-4128; also Germantown.
- Christine Teal**, 2150 Pennsylvania Ave., NW, Breast Cancer Center, Suite DC-110; 202-741-3187.
- Shawna C. Willey**, 3800 Reservoir Rd., NW, Pasque-rilla Healthcare Center, Fourth Floor; 202-444-0241.
- John P. Williams**, 8650 Sudley Rd., Suite 206, Manassas; 703-368-9234; also Warrenton, Haymarket.
- Pamela A. Wright**, 6420 Rockledge Dr., Suite 3700, Bethesda; 301-530-5151.

## Radiation Oncology

*Radiation oncologists specialize in the use of radiation to treat cancer. The following special-*

**Jane Grayson**, 4320 Seminary Rd., Alexandria; 703-504-7900.

**Robert L. Hong**, 1701 N. George Mason Dr., Arlington; 703-558-5000.

**Sheela D. Modin**, 2121 Medical Park Dr., Suite 4, Silver Spring; 301-681-4422.

**Martin Ojong-Ntui**, 2300 K St., NW, First Floor; 202-715-5120.

**Pamela Randolph-Jackson**, 110 Irving St., NW, Suite CG-116; 202-877-3925.

**Catherine L. Salem**, 40 W. Gude Dr., Suite 120, Rockville; 301-309-6765.

**Anu M. Singh**, 40 W. Gude Dr., Suite 120, Rockville; 301-309-6765.

**Susan F. Stinson**, 6420 Rockledge Dr., Suite 1200, Bethesda; 301-896-2012.

## Plastic Surgery

*Plastic surgeons specialize in restoring tissue damage; the following surgeons are recommended for breast reconstruction and repair.*

**David W. Allison**, 7915 Lake Manassas Dr., Suite 208, Gainesville; 703-754-8228.

**C. Coleman Brown**, 5454 Wisconsin Ave., Suite 1250, Chevy Chase; 301-215-5955.

**James R. Bruno**, 5454 Wisconsin Ave., Suite 1250, Chevy Chase; 301-215-5955.

**Steven P. Davison**, 3301 New Mexico Ave., NW, Suite 236; 202-966-9590.

**Gregory O. Dick**, 9711 Medical Center Dr., Suite 100, Rockville; 301-251-2600.

**Gloria Duda**, 6845 Elm St., Suite 708, McLean; 703-893-1111.

**Douglas L. Forman**, 11210 Old Georgetown Rd., North Bethesda; 301-881-7770.

**Roger J. Friedman**, 11210 Old Georgetown Rd., North Bethesda; 301-881-7770.

**Wendy R. Gottlieb**, 1850-A Town Center Pkwy., Suite 301, Reston; 703-668-9499.

**Kathy Huang**, 11210 Old Georgetown Rd., North Bethesda; 301-881-7770.

**Joanne J. Lenert**, 2150 Pennsylvania Ave., NW, Ninth Floor; 202-741-3242.

**Susan Early Otero**, 2440 M St., NW, Suite 200; 202-785-4187.

**G. Wesley Price**, 5550 Friendship Blvd., Suite 130, Chevy Chase; 877-373-2764; also Annandale.

**Scott L. Spear**, 3800 Reservoir Rd., NW, Suite 1PHC; 202-444-8612.

**Yongsook Victoria Suh**, 8503 Arlington Blvd., Suite 130, Fairfax; 703-646-0097.

.....

*Intern Adela Smith contributed research.*